

---

# **KNIGHT**

## **IDEX**

IDEX CORPORATION



# **ILCS Version 2.0 System Programming Manual**

---

## TABLE OF CONTENTS

Menu Map.....	3
Control Panel Diagram .....	4
Introduction.....	5
Access Codes .....	5
Memory Functions.....	6
Setup Routines.....	9
Report Setup Routines .....	11
Maintenance Schedule .....	15
Programming Routines.....	16
Operation.....	18
Warranty Information.....	20
Knight Locations.....	20

---

## MENU MAP

### **1**    \*\*\*    DISPENSER    \*\*\* MEMORY FUNCTIONS

- Clear pump volumes
- Clear sum/cycle report
- Clear batch count
- Load factory defaults
- Set external memory module ID

### **2**    \*\*\*    DISPENSER    \*\*\* SETUP ROUTINES

- Change dispenser ID #
- Change main access code
- Set date and time
- Set unit of measure
- Set flush time
- Set simultaneous pump operation

### **3**    \*\*\*    DISPENSER    \*\*\* REPORT SETUP ROUTINES

- Change user access code
- Change user password
- Change formula access
- Change report name
- Change chemical names
- Change product costs
- Change formula names
- Set shift times
- Set operating zone

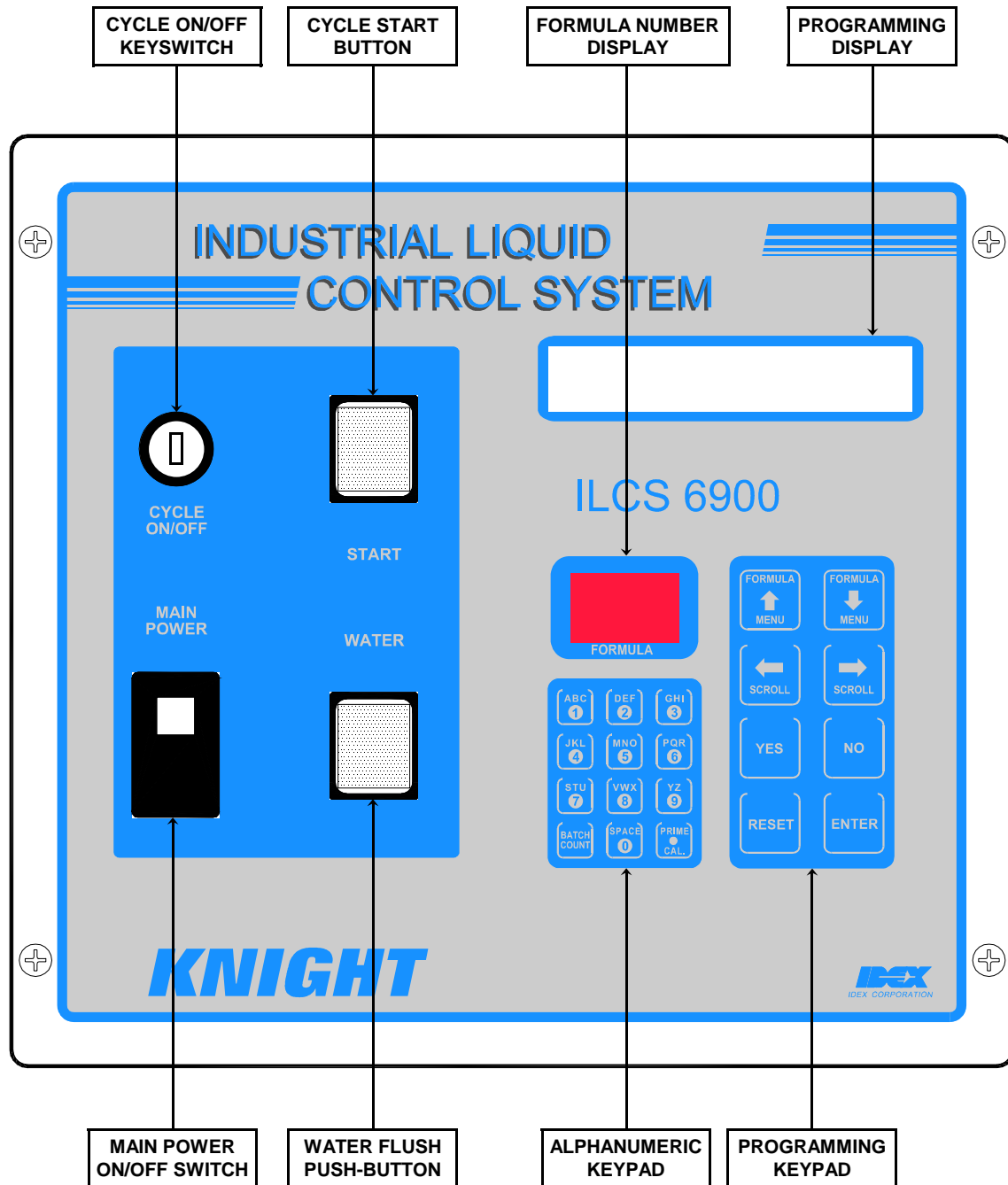
### **4**    \*\*\*    DISPENSER    \*\*\* MAINTENANCE SCHEDULE

- Date dispenser installed
- Date squeeze tube last changed
- Date squeeze tube last lubed

### **5**    \*\*\*    DISPENSER    \*\*\* PROGRAMMING ROUTINES

- Prime pumps
- Calibrate pumps
- Manually enter pump flow rates
- Program formulas

# ILCS CONTROLLER DIAGRAM



---

## MOVING THROUGH THE MENUS

ILCS programming is done through the use of menu selections. Any menu can be entered by pressing the ENTER button, or exited by pressing RESET (or in some cases MENU ↓ or ↑). Its that simple! Each of the main menu headings give an idea of what information can be found, entered, or changed. Within each main menu selection are several screen "prompts" that walk you through the complete programming process step-by-step.

Below is an example of the main display when you are not in the programming menus. The main display is more commonly referred to as the *default display*, and appears when the system is in normal operating mode.

<b>FORMULA 01</b> <b>DATE 05/11</b> <b>TIME 14:32:54</b>	<p>The default display shows the present formula name on the top line. The bottom line of the display will alternate between date/time and the message ENTER USER PASSWORD.</p> <p>The "user password" should not be confused with systems access code. User passwords allow multiple persons to operate the system for dispensing chemicals, whereas the access code allows entry into the menus for programming.</p> <p>From the default display, you must enter the main access code (following) to begin programming.</p>
---	---

## ACCESS CODES

The ILCS system has two access codes for protection:

- The "main" access code, allows entry into ALL of the menus and functions of the system.
- The "user" access code allows printing reports with WinReporter PC software, without the ability of changing programmed information.

Systems are shipped from the factory with both access codes set to zero. Only a person with the "main" access code can change the "user" access code. (changing codes is explained later in this manual). If desired the two access codes can be the same, however the user will then have access to ALL of the functions of the system, including the ability of changing programmed information.

## TO PROGRAM DISPENSER PRESS "ENTER" ...

<b>ENTER ACCESS CODE THEN PRESS ENTER</b>	<p>From the default display shown above, press the ENTER button. The screen at left should appear. If the screen at left does not appear, wait 2 seconds, press RESET, then press ENTER.</p> <p>When you see the screen at left, type in the access code and press ENTER. Remember, for a new system, the access code will be zero (until you change it later).</p> <p>Follow the programming steps for each section, starting on the next page.</p>
---	--

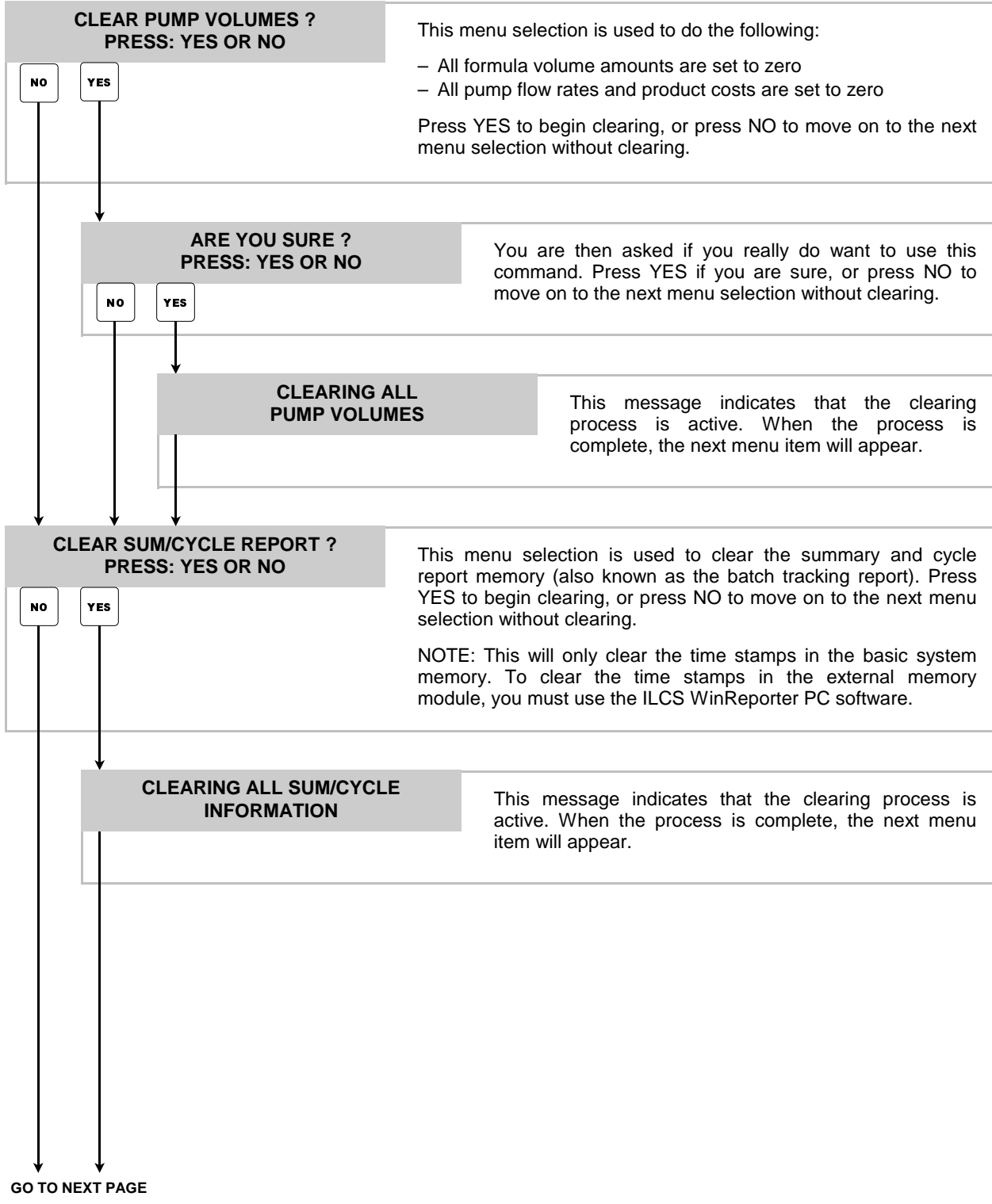
## IMPORTANT NOTES:

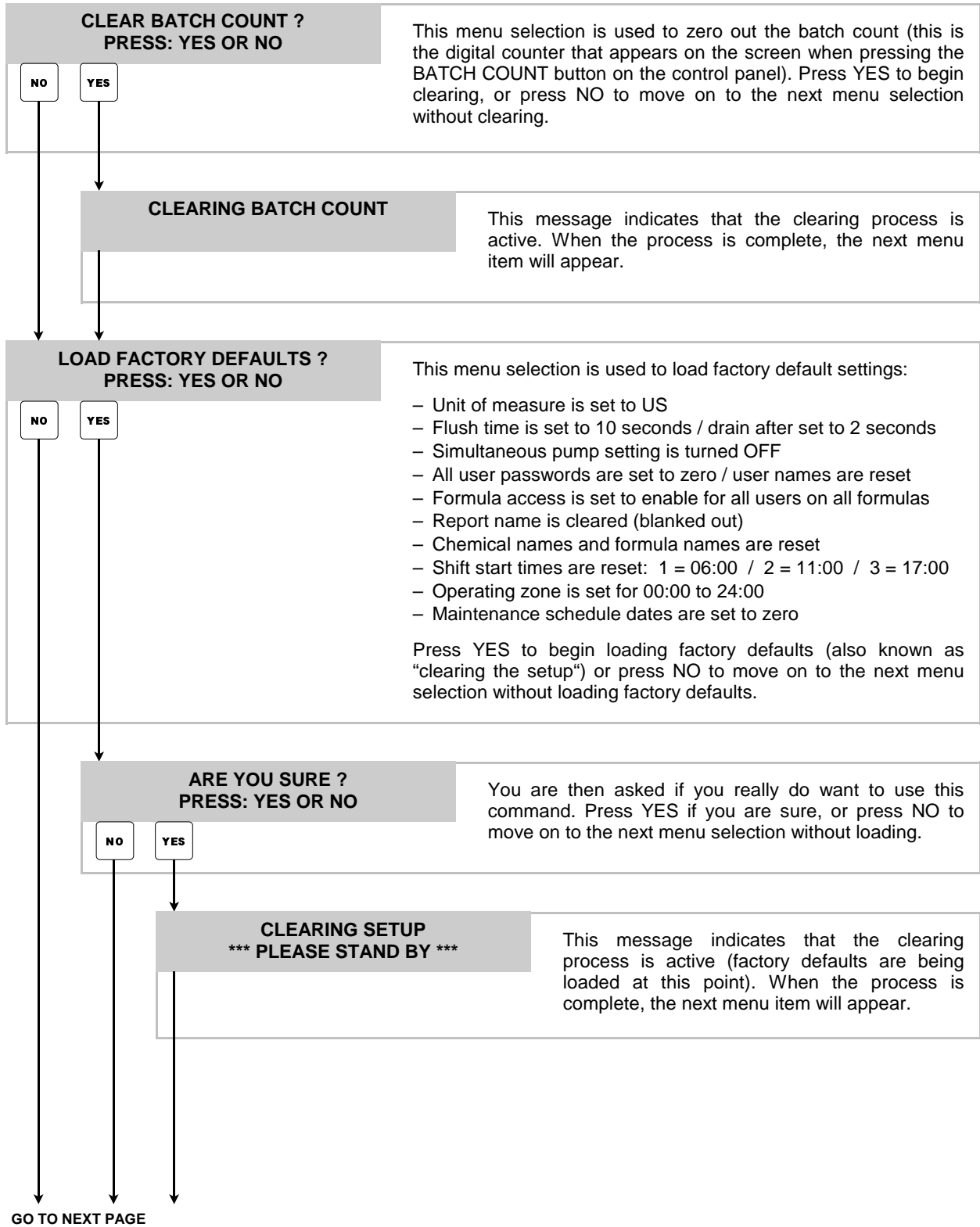
- Leading zeroes on main access code, user access code, and user passwords, are not required to be entered. For example, a user password of "010" can be typed in as "10", then press ENTER.
- Its recommended to clear pump volumes, sum/cycle report, and batch count, then loading factory defaults prior to initial programming of formulas. See MEMORY FUNCTIONS [menu 1] for details.
- If at any time you get lost in the programming and are not sure what to do, press the RESET button until the section menu heading appears, then proceed.

**1**

**\*\*\* DISPENSER \*\*\*  
MEMORY FUNCTIONS**

- Clear pump volumes
- Clear sum/cycle report
- Clear batch count
- Load factory defaults
- Set external memory module ID





**1**

**\*\*\* DISPENSER \*\*\*  
MEMORY FUNCTIONS**

• Continued

**SET EXT MEM MODULE ID ?  
PRESS: YES OR NO**

**NO**   **YES**

This menu selection is used to set the ID number of the external memory module to match the dispenser's ID.

Press NO for a new installation, or if the external memory module ID had been set previously.

Press YES if you have changed the dispenser ID in menu #2. Be sure the unit is not be multi-linked (with other dispensers) while performing this step.

**ARE YOU SURE ?  
PRESS: YES OR NO**

**NO**   **YES**

You are then asked if you really do want to use this command. Press YES if you are sure, or press NO to return back to the menu heading without setting.

**SETTING EXT MEM MODULE  
\*\*\* ID TO CURRENT ID \*\*\***

This message indicates that the ID number of the external memory module is being set to the dispenser's current ID number. When the process is complete, you will be returned back to the menu heading.

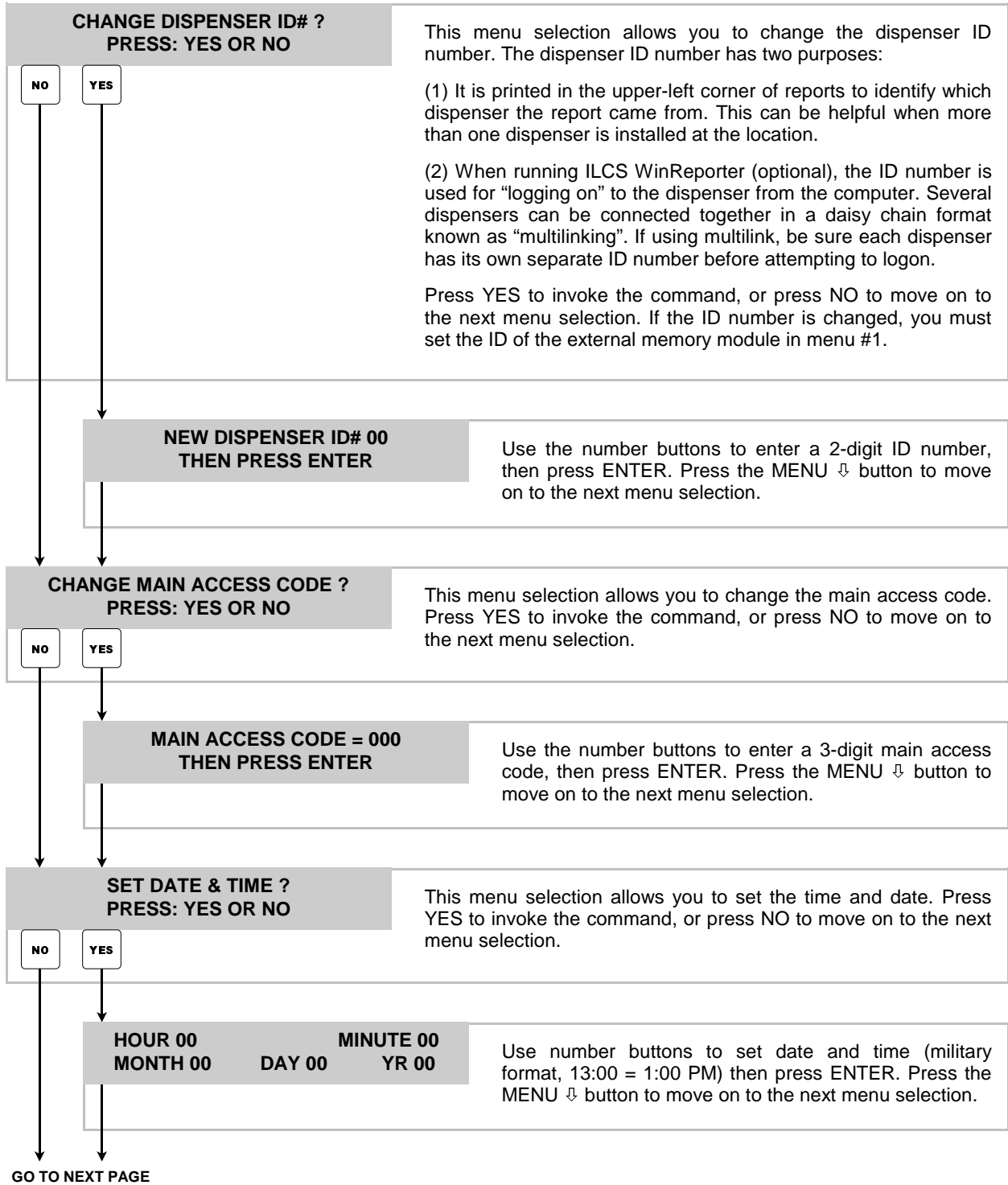
MEMORY FUNCTIONS MENU HEADING



## 2

### \*\*\* DISPENSER SETUP ROUTINES \*\*\*

- Change dispenser ID #
- Change main access code
- Set date and time
- Set unit of measure
- Set flush time
- Set simultaneous pump operation



## 2

### \*\*\* DISPENSER SETUP ROUTINES \*\*\*

• Continued

UNIT OF MEASURE = US  
1=US 2=METRIC 3=IMPERIAL

This menu selection allows you to change the unit of measure. Use the number buttons to choose the desired unit of measure. Press the MENU ↵ button to move on to the next menu selection.

FLUSH TIME 10 SEC  
TO DRAIN AFTER 02 SEC

**Disregard this menu for systems without flush manifold.**

This menu selection allows you to set flush time (how long the flush solenoid is activated after the chemical injection) and “to drain after” time (the time delay before the optional 3-way valve is activated). These settings let you custom tailor the system to meet your particular flush and drain requirements. Use the number buttons to set the times and, then press ENTER. Press the MENU ↵ button to move on to the next menu selection.

Factory defaults and minimum settings are as follows:

**Flush:** Default is 10 seconds / minimum is 2 seconds.

**To Drain After:** Default is 2 seconds / minimum is 2 seconds.

SIMULTANEOUS PUMPS = OFF  
1=OFF 2=ON

This menu selection allows you to choose if you want all pumps to operate simultaneously. When this selection is on, all pumps will run at the same time. When this selection is off, pumps will run in sequence from left to right (lowest number to highest). Use the number buttons to make your selection. Press the MENU ↵ button to move on to the next menu selection.

FLUSH ERROR SAMPLING  
DELAY = 00 SECONDS

**Disregard this menu for systems without flush manifold.**

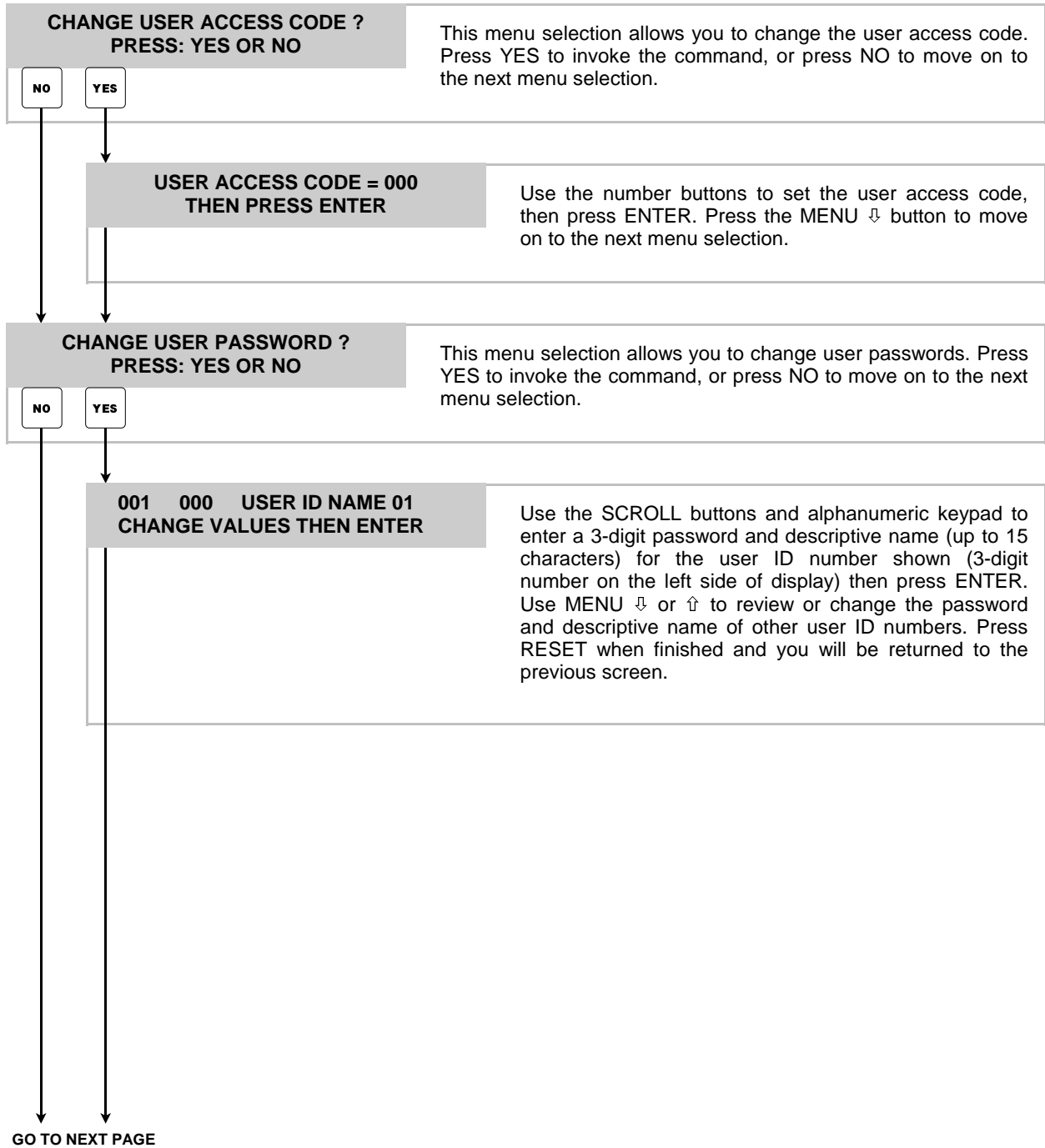
This menu selection allows you to set the amount of time that the optional flow sensor switch can “break” contact before giving a flush error. Use the number buttons to set the sampling time and, then press ENTER. Leave the setting at 00 if a flow switch is not used (typical for most flush manifold applications). Press the MENU ↵ button to move on to the next menu.

SETUP ROUTINES MENU HEADING

### 3

### \*\*\* DISPENSER \*\*\* REPORT SETUP ROUTINES

- Change user access code
- Change user password
- Change formula access
- Change report name
- Change chemical names
- Change product costs
- Change formula names
- Set shift times
- Set operating zone



**CHANGE FORMULA ACCESS ?  
PRESS: YES OR NO**

This menu selection allows you to restrict the users access to specific formulas. Press YES to invoke the command, or press NO to move on to the next menu selection.

NO

YES

```
001  FORM-01 02 03 04
USER ID NAME 1  1  1  1
```

**TO CHANGE:** Type in the user ID number and press ENTER. Then use the SCROLL buttons to move to the cursor below the formula you wish to change. Choose 1 (enabled) or 0 (disabled) for each formula shown (note: the PRIME/CAL button will change all formulas shown to 0) and press ENTER. When ENTER is pressed, you are only changing the formula number "set" that is shown on the display. To change other formulas, use MENU ↓ or ↑ then make your changes to the formula set shown and press ENTER again. The following paragraphs explain the information shown on the window.

*Top line:* The first three digits are the user ID number (001 - 400). The next set of double digits represent the formula numbers.

*Bottom line:* The first thirteen characters indicate the user's descriptive name. The numbers below the formula numbers show which formulas this user can access. 1 means the formula is allowed, 0 means the formula is not allowed.

**TO VIEW:** Type in the user ID number and press ENTER. The screen will display current settings for each formula. Use MENU ↓ or ↑ to choose other formula numbers.

Press RESET when finished and you will be returned to the previous screen.

GO TO NEXT PAGE

**3****\*\*\* DISPENSER \*\*\*  
REPORT SETUP ROUTINES**

• Continued

**CHANGE REPORT NAME ?  
PRESS: YES OR NO**

This menu selection allows you to change the report name. Press YES to invoke the command, or press NO to move on to the next menu selection.



The screen will be blank with only a blinking cursor displayed. Use the alphanumeric buttons to set the report name (up to 23 characters on each line) and the SCROLL buttons to move the cursor position, then press ENTER. Press the MENU ↓ button to move on to the next menu selection.

**CHANGE CHEMICAL NAMES  
PRESS: YES OR NO**

This menu selection allows you to change the chemical names. Press YES to invoke the command, or press NO to move on to the next menu selection.



PUMP 01  
PUMP-01

Choose pump number and press ENTER. Move cursor (SCROLL) to set the product name and press ENTER. Repeat for all pumps. Press MENU ↓ when finished.

**CHANGE PRODUCT COSTS ?  
PRESS: YES OR NO**

This menu selection allows you to change the product costs. Press YES to invoke the command, or press NO to move on to the next menu selection.



PUMP 01    \$00.00 /GALS

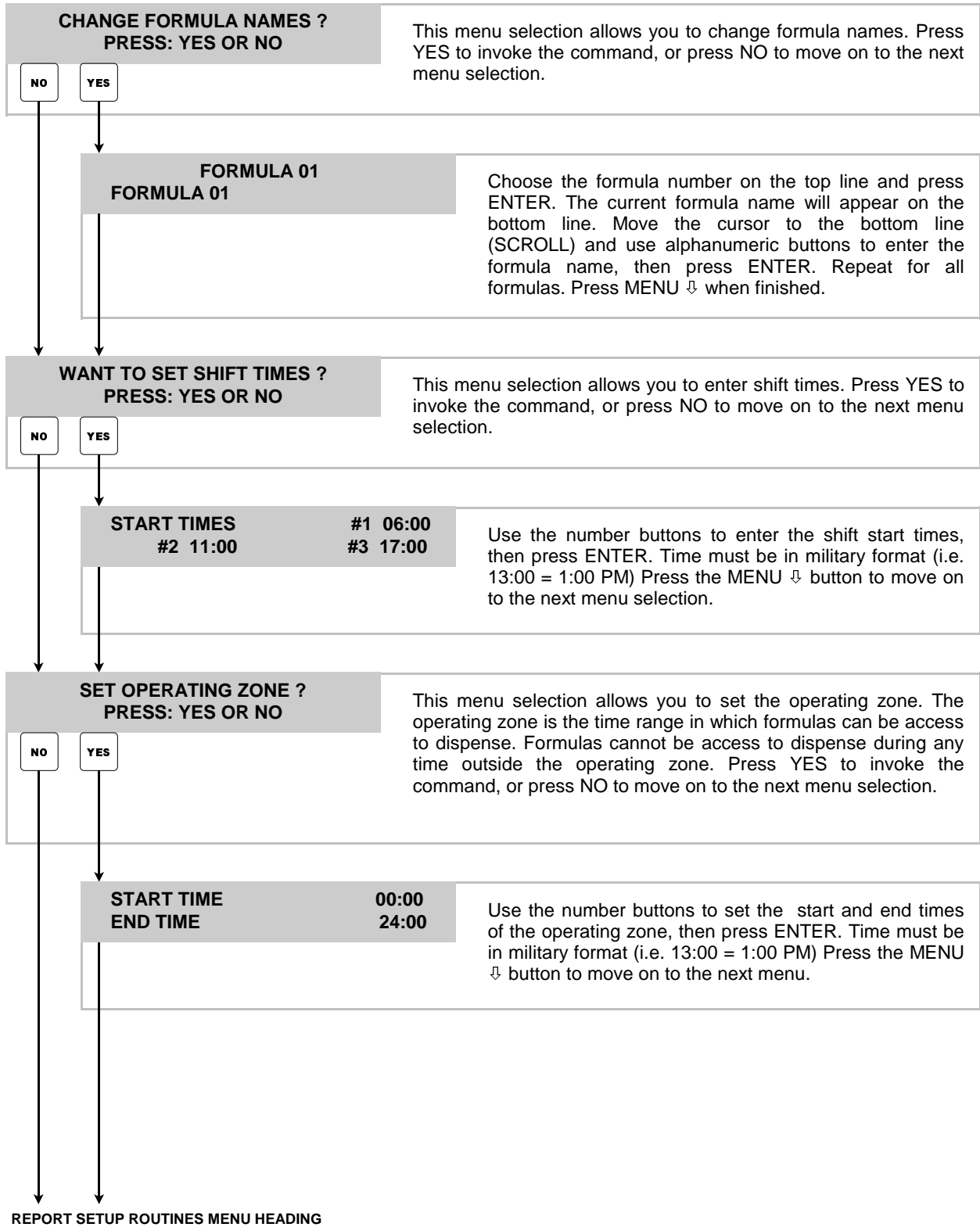
Choose pump number and press ENTER. The screen will display the current value. Move cursor (SCROLL) to enter the product cost and press ENTER. Repeat for all pumps. Press MENU ↓ when finished.

GO TO NEXT PAGE

### 3

## \*\*\* DISPENSER \*\*\* REPORT SETUP ROUTINES

• Continued



---

**4****\*\*\* DISPENSER \*\*\*  
MAINTENANCE SCHEDULE**

- Date dispenser installed
- Date squeeze tube last changed
- Date squeeze tube last lubed

**DISPENSER INSTALLED  
00/00/00**

This menu selection allows you to set the installation date. Use the number buttons to set the date, then press ENTER. Press the MENU ↵ button to move on to the next menu selection.

**SQUEEZE TUBES CHANGED  
PUMP 01 00/00/00**

This menu selection allows you to set the date that the squeeze tubes were last changed. Use the number buttons to set the date, then press ENTER. Do this for each pump in the system. Press the MENU ↵ button to move on to the next menu selection.

**SQUEEZE TUBES LAST LUBED  
PUMP 01 00/00/00**

This menu selection allows you to set the date that the squeeze tubes were last lubed. Use the number buttons to set the date, then press ENTER. Do this for each pump in the system. Press the MENU ↵ button to move on to the next menu selection.

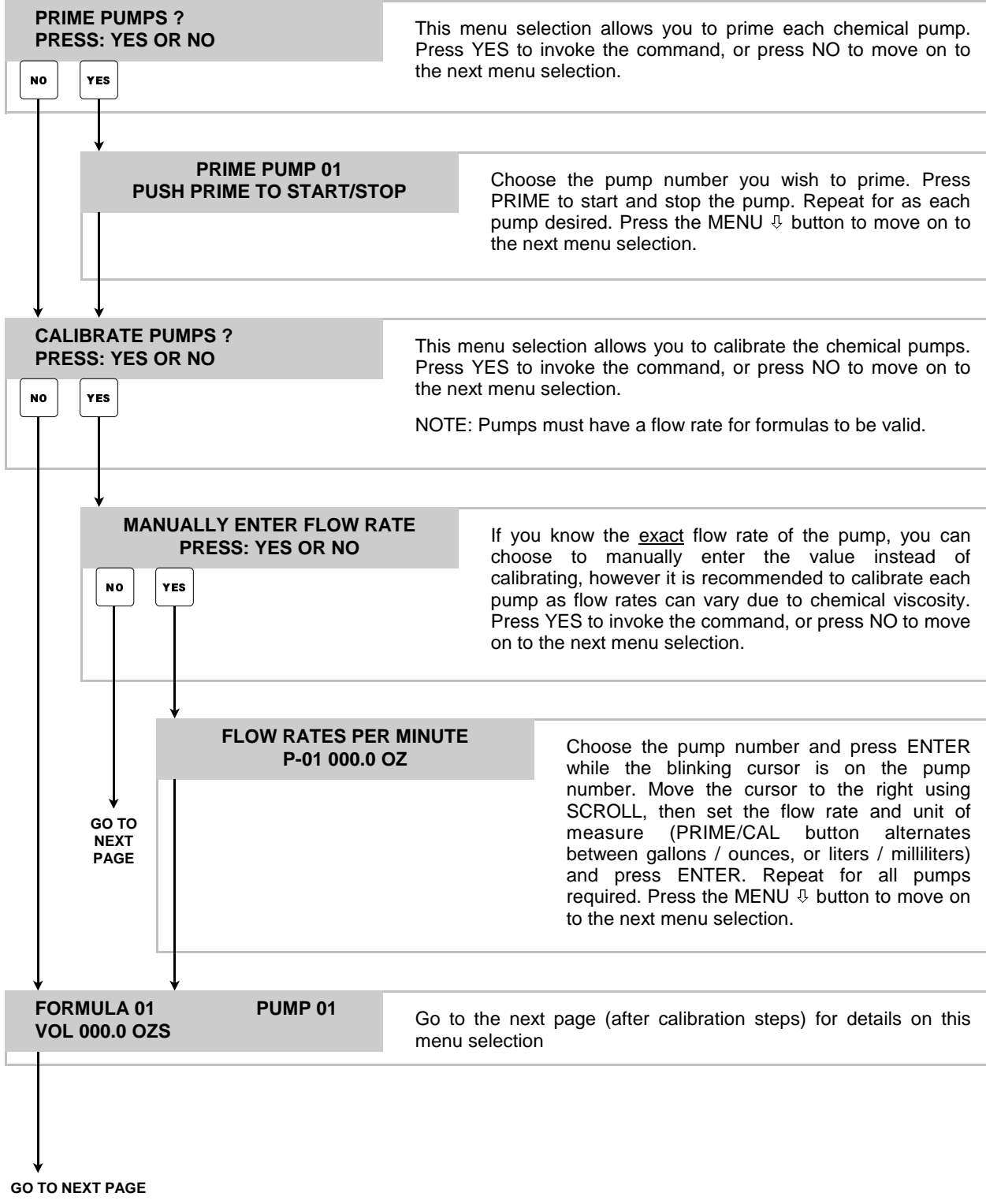
MAINTENANCE SCHEDULE MENU HEADING

---

# 5

## \*\*\* DISPENSER \*\*\* PROGRAMMING ROUTINES

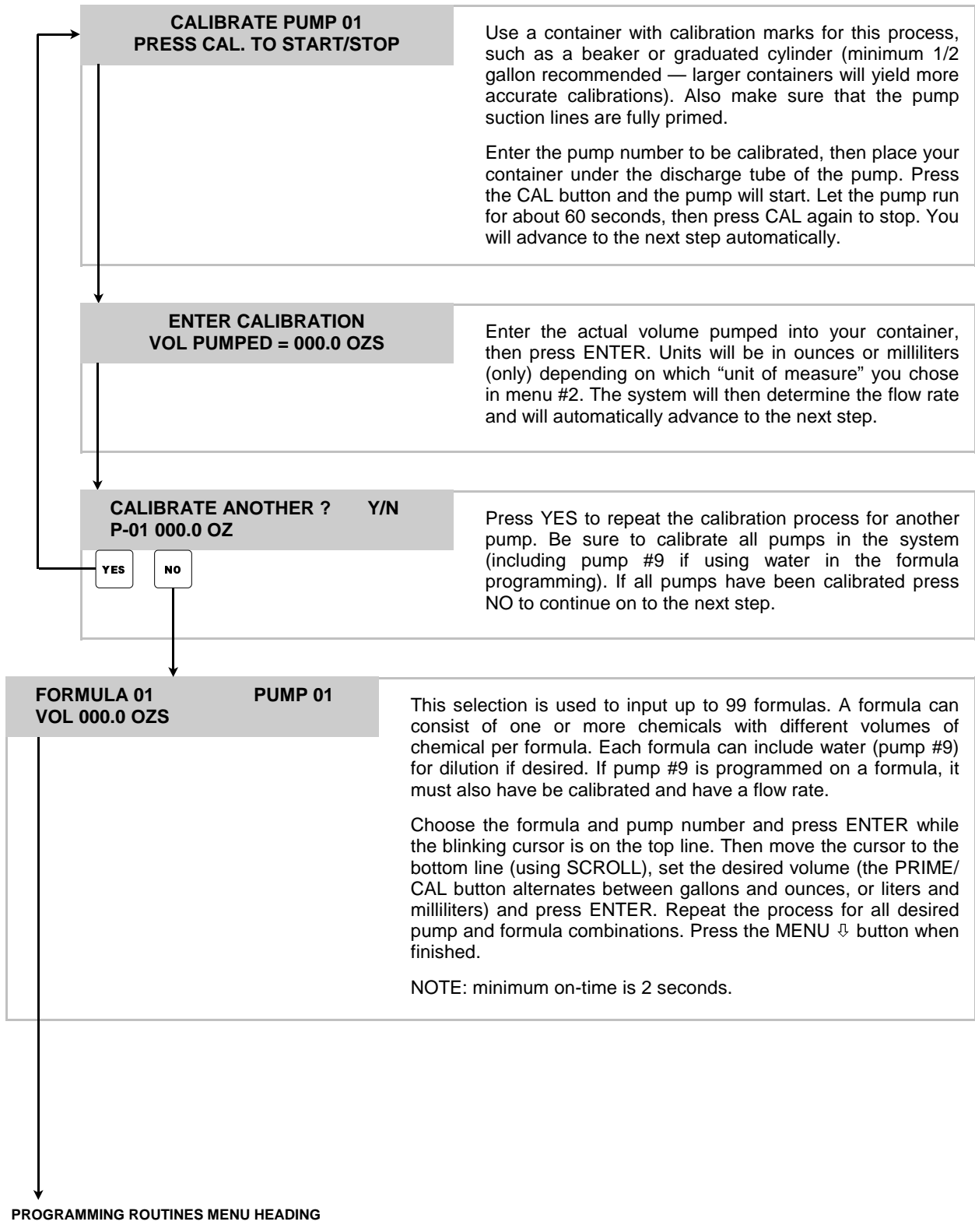
- Prime pumps
- Calibrate pumps
- Manually enter pump flow rates
- Program formulas





**5****\*\*\* DISPENSER \*\*\*  
PROGRAMMING ROUTINES**

• Continued



---

## OPERATION

When all system programming is complete, you will be ready for operation. Check that all chemical lines are primed and that the water source is turned on if using a flush manifold.

- (1) Press Main Power switch to ON position.
- (2) Insert the key and turn to the right (key cannot be removed when on).
- (3) Place container under the discharge spout.
- (4) Type in your user password and press ENTER — if your password was accepted, the display will flash a brief acknowledgement and you will then see the following.

### FORMULA 01 SELECT FORMULA/HIT START

- The top line will show the current formula name.
- The bottom line will alternate between the date/time and the display shown to the left.

Use  $\uparrow/\downarrow$  to choose the desired formula, then press **START**. If the message "ACCESS RESTRICTED" appears, it indicates that the current user is not allowed to dispense the formula selected. Otherwise, the unit will operate as follows.

- Chemicals will begin pumping, starting with the lowest number pump to the highest number (if there is more than one chemical programmed in the formula).
- If simultaneous pumps option is turned ON, then all pumps on the formula will run together (if there is more than one chemical programmed in the formula).
- The display will count down the remaining time left to pump.
- When pumps are finished, the flush will activate for its programmed time, and the 3-way valve (if used) will activate after the time set to drain after.
- If the RESET button is pressed during operation, you will then see the following message.

### ABORT CURRENT BATCH? PRESS: YES OR NO

- If you press NO, the system will finish the batch as normal.
- If you press YES, you will then see the following.

### FLUSH SYSTEM? PRESS: YES OR NO

Choose if you want to flush the system from any remaining chemical. The pumps will not run during this function.

When finished, the system will return to the default display and will record the *actual* amount dispensed (instead of the *programmed* amount) in the batch tracking memory.

---

**NOTES**

---

## DISCLAIMER

Knight Inc. does not accept responsibility for the mishandling, misuse, or non-performance of the described items when used for purposes other than those specified in the instructions. For hazardous materials information consult label, MSDS, or Knight Inc. Knight products are not for use in potentially explosive environments. Any use of our equipment in such an environment is at the risk of the user, Knight does not accept any liability in such circumstances.

## WARRANTY

All Knight controls and pump systems are warranted against defects in material and workmanship for a period of ONE year. All electronic control boards have a TWO year warranty. Warranty applies only to the replacement or repair of such parts when returned to factory with a Knight Return Authorization (KRA) number, freight prepaid, and found to be defective upon factory authorized inspection. Bearings and pump seals or rubber and synthetic rubber parts such as "O" rings, diaphragms, squeeze tubing, and gaskets are considered expendable and are not covered under warranty. Warranty does not cover liability resulting from performance of this equipment nor the labor to replace this equipment. Product abuse or misuse voids warranty.

### ***KNIGHT INC.*** A Unit of IDEX Corporation

**World Headquarters: 20531 Crescent Bay Drive, Lake Forest, CA 92630-8825 (USA) TEL: 949-595-4800, FAX: 949-595-4801, [www.knightequip.com](http://www.knightequip.com)**

Atlanta Branch: 415 Gees Mill Business Court NE, Suite 200 Conyers, GA 30013 USA TEL: 770-760-8777 FAX: 770-761-0199	Toronto Branch: 2880 Argenta Road, Unit 6 Mississauga, Ontario L5N 7X8 Canada TEL: 905-542-2333 FAX: 905-542-1536	London Branch: #15 Brunel Centre Newton Road, Crawley West Sussex UK RH10 9TU TEL: 44-1293-615570 FAX: 44-1293-615585	Sydney Branch: Unit 28, 317-321 Woodpark Rd., Smithfield NSW Australia 2164 TEL: 61-29-725-2588 FAX: 61-29-725-2025	Amsterdam Branch: Marssteden 68 7547 TD Enschede The Netherlands TEL: 31-53-428-58-00 FAX: 31-53-428-58-09	Spain Branch: Port Ginesta, Local 210 08860 Sitges Barcelona Spain TEL: 34-936-342-130 FAX: 34-936-643-477
---	--	--	--	---	---